

PART OF SW 1/4 OF NE 1/4
SECTION 20, T.6N., R.1W., S.L.B. & M.

114-1

IN OGDEN CITY
SCALE 1" = 60'

TAXING UNIT: 25

SEE PAGE 114

CHILDS AVE.

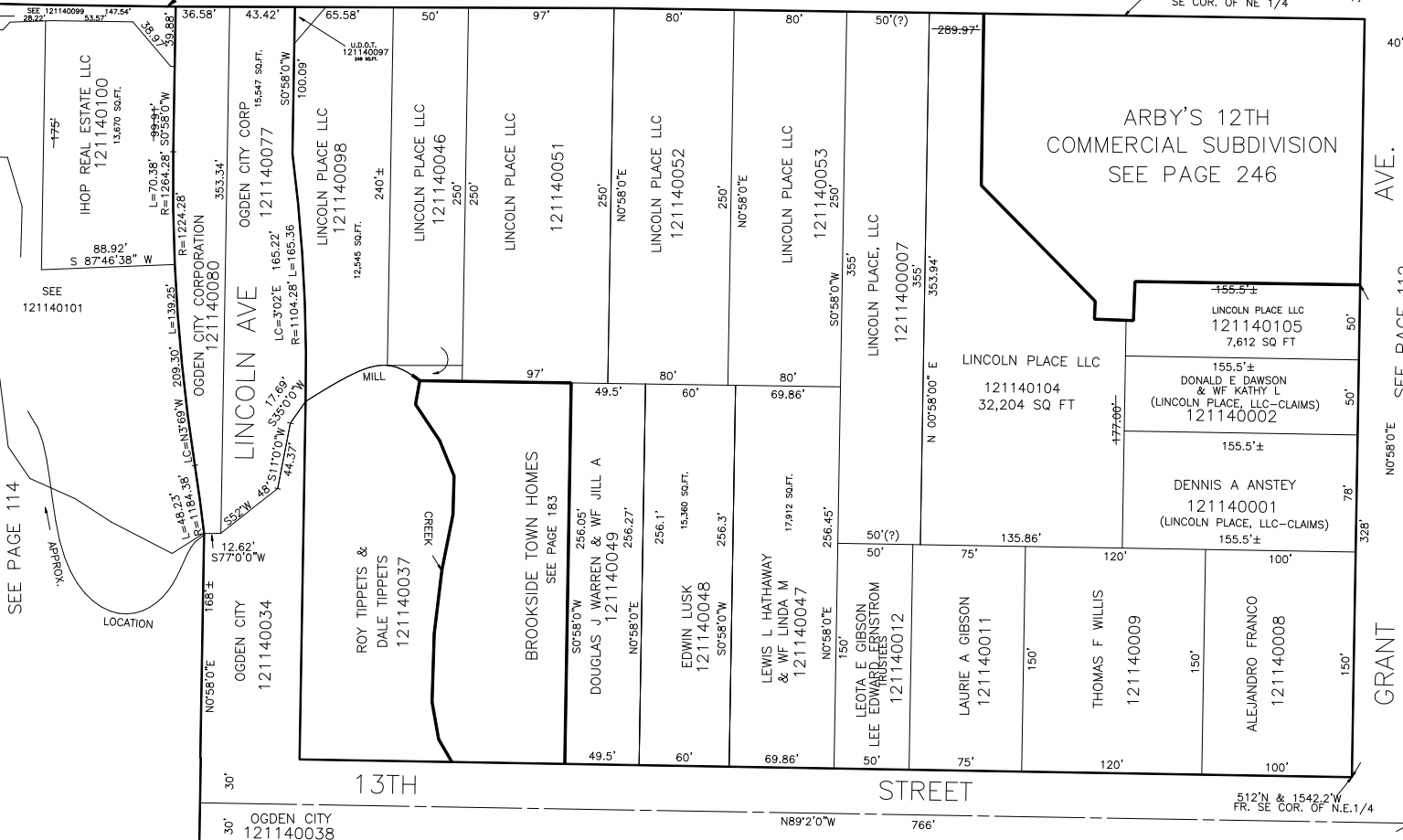
12TH

STREET

W.LINE OF LINCOLN AVE. AS EXTENDED

N89°9'45"W

N0°58'E 1026.20' &
N89°9'45"W 1697.70' FR.
SE COR. OF NE 1/4



SEE PAGE 114

SEE PAGE 112

GRANT AVE.